

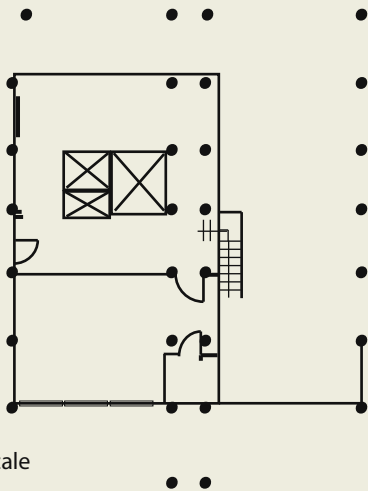
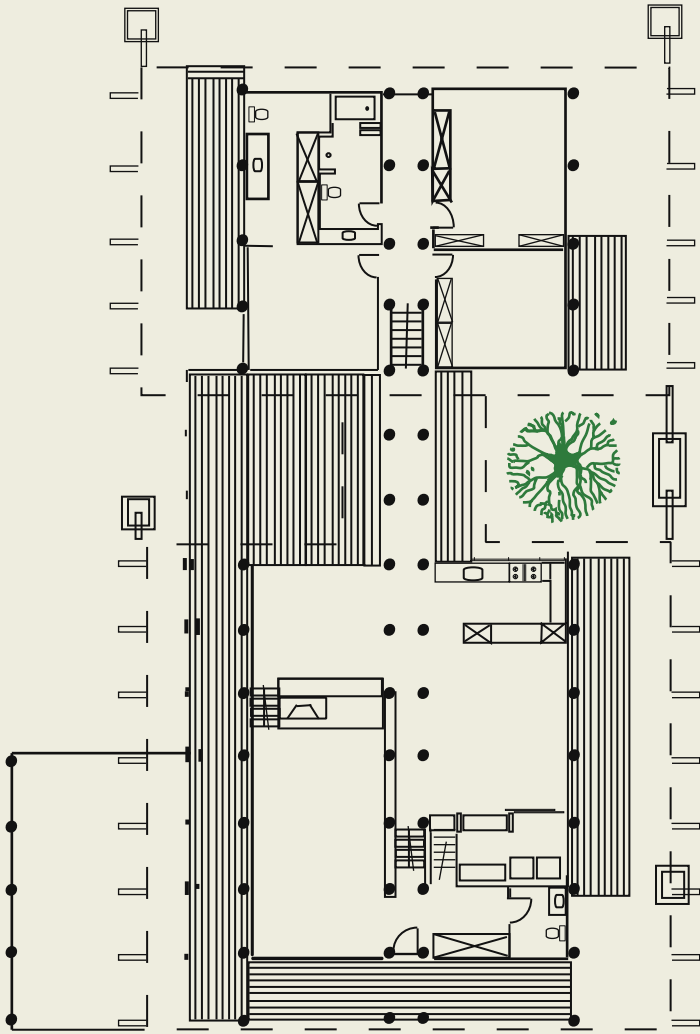
## 8513 Buckingham Drive, El Cerrito Stunning Architectural Masterpiece

This exquisite home designed by architect Seiichi Kami was built for his family in 1964 and owned by him until 2002. The elegant, peaceful Japanese aesthetics throughout the house make this a wonderful home for entertaining, relaxing or enjoying lovely San Francisco and bay views.

- Soaring roofline with 25' ceilings
- Walls of glass throughout the house offer Bay and tranquil verdant views
- Three bedrooms including master suite, two and a half baths
- Wraparound redwood decks provide wonderful indoor/outdoor access from almost every room
- Downstairs area with large additional room (possible 4th bedroom), unfinished bath and plentiful storage
- Functional kitchen with Wolf Range, Fisher Paykel refrigerator, Bosch dishwasher
- Just minutes to parks, shops, restaurants, public transportation and freeways
- Per public records: 2667 sq. ft. living space, 10,575 sq. ft. lot size

**Offered at \$1,225,000**

For more information and photos, please visit:  
[www.8513buckingham.com](http://www.8513buckingham.com)



Drawings not to scale

### Unique features:

- Main structure consists of 62 wooden poles
- All exterior and interior walls are single-length vertical redwood siding
- Floor to ceiling windows on almost every exterior wall
- Continuous fluorescent coved wall lighting fixtures in all rooms
- V shaped roof drain gutters flow to five masonry catch basins
- Two furnaces for separate zoned heating systems in front and rear wings
- Two newer water heaters (2003) with on-demand hot water in rear wing
- Passageway connects front wing with rear wing

### Front Wing:

- Expansive, open design in the living, dining and family room
- Sunken spacious living room with large fireplace and hearth
- Family room with 73" HDTV (included with the property)
- Laundry room with pantry and extra storage behind entertainment wall
- New Wolf Range, Fisher Paykel refrigerator and Bosch dishwasher
- Vanity half-bath near entrance

### Rear Wing:

- Rear wing floor level connected with 4-foot wide stairway
- 3 bedrooms and 2 baths
- Japanese soaking tub

### Downstairs:

- Downstairs area with large bonus room (possible 4<sup>th</sup> bedroom or home office) and unfinished, fully plumbed bathroom
- Abundant storage space and workshop
- 2-car carport